

POLICYHOLDERS NOT LAMBLE FOR INCOME CERTIFICATES ISSUED

Judge Bell, of Superior Court, Makes Importing Ruling Affecting Mutual Insurance Companies

DEPUTY OF GEORGIA COMPTROLLER SUSTAINED

Commissioner Wright Wins in Suit Brought by Income Certificate Holders of American Annuity

In substance that the policy owner in mutual insurance companies is not liable for the amount of income taxes paid by the company, but that the superior court has handed down a series of orders in the case of Commissioner Wright and American Annuity Co. The decision is one of the most important in the history of the insurance industry in this state. It affects all mutual companies and all policy holders. The case was brought by the American Annuity Co. against the Georgia Insurance Commissioner, Wright, who had refused to issue income certificates to the policy holders of the company. The superior court has now ruled in favor of the commissioner, sustaining his refusal to issue the certificates.

ORDER SUSTAINED. The decision in the action was brought by American Annuity Co. against the Georgia Insurance Commissioner, Wright, who had refused to issue income certificates to the policy holders of the company. The superior court has now ruled in favor of the commissioner, sustaining his refusal to issue the certificates. The case was brought by the American Annuity Co. against the Georgia Insurance Commissioner, Wright, who had refused to issue income certificates to the policy holders of the company. The superior court has now ruled in favor of the commissioner, sustaining his refusal to issue the certificates.

WILL AS CO-LEGATARY. The decision in the case of Wright vs. American Annuity Co. was handed down by the superior court. The court ruled in favor of the commissioner, sustaining his refusal to issue income certificates to the policy holders of the company. The case was brought by the American Annuity Co. against the Georgia Insurance Commissioner, Wright, who had refused to issue income certificates to the policy holders of the company. The superior court has now ruled in favor of the commissioner, sustaining his refusal to issue the certificates.

RE DRIVES RESCUERS FROM HILLCREST MINE. Workers After Securing Twenty-Charged Bodies Are Forced to Flee

ATLANTA, June 26.—The rescue of the bodies of the twenty men who were killed in the Hillcrest mine explosion is being hastened. The bodies were recovered from the mine and are being taken to the morgue. The rescue of the bodies is being hastened. The bodies were recovered from the mine and are being taken to the morgue. The rescue of the bodies is being hastened. The bodies were recovered from the mine and are being taken to the morgue.

PEACH SHIPMENT FROM FORT VALLEY HAS BEGUN. Most Successful Peach Season in Many Years Predicted

ATLANTA, June 26.—The peach season in Georgia is expected to be the most successful in many years. The peach crop is expected to be large and of high quality. The peach season in Georgia is expected to be the most successful in many years. The peach crop is expected to be large and of high quality. The peach season in Georgia is expected to be the most successful in many years. The peach crop is expected to be large and of high quality.

Well, We Have One American Who Can Win From Brits

Walter Brock Defeats Eight in Air Race From London to Manchester

LONDON, June 26.—Walter L. Brock, the American aviator, today won the air race from London to Manchester and back, beating eight competitors. The course of the race was 222 miles over the most thickly populated district in the country. The prize for the fastest time was \$10,000 and \$1,000 for each hour. Brock covered the course of 222 miles in a crewless biplane in 4 hours, 41 minutes and 24 seconds, averaging 54 miles an hour.

Immorality, Movies And Baseball Help Increase Insanity

CHICAGO, June 26.—Insanity in Cook county is increasing at a faster rate than the population, according to figures released yesterday by John H. Owens, judge of the county court, showing a 100 per cent increase in the number of insanity cases since 1917. Immorality and the increasing complexity of city life were said by Judge Owens to be the chief causes of insanity.

MOTION FOR NEW TRIAL OF CONLEY TO BE HEARD

Case of Negro May Be Considered With Others in Court Next Saturday

Orders given court attaches Saturday by Judge Hill, of the criminal division of the superior court, who has just returned from a tour of duty in the United States. The case of the Negro, Conley, convicted of the murder of a white man, is to be heard next Saturday. The case is to be heard with others in the court. The case is to be heard with others in the court. The case is to be heard with others in the court.

TURKS TO ALLOW GREEKS TO RETURN TO COUNTRY

Ottoman Government to Also Pay Indemnity for Losses to Those Banished

CONSTANTINOPLE, June 26.—It was stated on good authority here today that the Turkish government has indicated its willingness to allow the Greek subjects who have been banished from the country to return. The Ottoman government is to also pay indemnity for the losses of those who have been banished. The Ottoman government is to also pay indemnity for the losses of those who have been banished.

Reply Taken for Desire of Turks to Become Friendly

ATLANTA, June 26.—It is believed here that the Turkish government has indicated its willingness to allow the Greek subjects who have been banished from the country to return. The Ottoman government is to also pay indemnity for the losses of those who have been banished. The Ottoman government is to also pay indemnity for the losses of those who have been banished.

RAILROAD STATION IS BURNED BY MILITANTS

ATLANTA, June 26.—The railroad station in Atlanta was burned by militants. The station was destroyed by fire. The station was destroyed by fire. The station was destroyed by fire.

FRISCO MAN SELECTED AS RUSSIAN AMBASSADOR

George T. Marjane Named by Wilson to Be Soon Nominated

WASHINGTON, June 26.—George T. Marjane, of Frisco, Tex., has been selected by the president to be the Russian ambassador to the United States. The nomination is expected to be made soon. The nomination is expected to be made soon. The nomination is expected to be made soon.

BIPLANE RIPS OPEN BIG WAR DIRIGIBLE, KILLING NINE MEN

Biplane Rips Dirigible Airship During Maneuvers, Hurling Balloon's Occupants to Death

VIENNA, June 26.—Nine aviators lost their lives today when a biplane was in the air was suddenly ripped open by a dirigible during maneuvers. The dirigible was a large war dirigible. The dirigible was a large war dirigible. The dirigible was a large war dirigible.

SHIP TAKES FIRE, CAUSING EXPLOSION

Army Captain, Four Lieutenants, Naval Officer, Two Soldier Mechanics and Civil Engineer All Killed

VIENNA, June 26.—The biplane was in the air was suddenly ripped open by a dirigible during maneuvers. The dirigible was a large war dirigible. The dirigible was a large war dirigible. The dirigible was a large war dirigible.

ASQUITH GIVES MILITANTS AUDIENCE IN RESIDENCE

Argues That If Women Got Votes They Would Not Be Satisfied

LONDON, June 26.—Premier Asquith today gave a private audience to a delegation of militant suffragettes. The delegation was led by Mrs. Pankhurst. The delegation was led by Mrs. Pankhurst. The delegation was led by Mrs. Pankhurst.

FRENCHMAN MAY LOSE RIGHTS OF CITIZENSHIP

Julius Raoul in Federal Prison Charged With Fraud in Getting Papers

ATLANTA, June 26.—Julius Raoul, a Frenchman, is in the federal prison in Atlanta. He is charged with fraud in getting his citizenship papers. He is charged with fraud in getting his citizenship papers. He is charged with fraud in getting his citizenship papers.

ONE OFFICER OF CLOSED BANK TO BE INDICTED

LaSalle Official Said to Have Taken Deposit When Bank Was Insolvent

CHICAGO, June 26.—The LaSalle Street Bank in Chicago is closed. One of the officers of the bank is to be indicted. The bank is closed. One of the officers of the bank is to be indicted. The bank is closed. One of the officers of the bank is to be indicted.

MR. ED HOWELL DIES AT HOME IN DOOLY COUNTY

VIENNA, June 26.—Mr. Ed Howell, a native of North Carolina, died at his home in Dooly county, Ga. He was 70 years old. He was 70 years old. He was 70 years old.

Dead in Landslide

NICE, June 26.—Twelve people were killed and several injured by a landslide today in a tunnel of the new railway from Nice to Cannes. The landslide was caused by heavy rain. The landslide was caused by heavy rain. The landslide was caused by heavy rain.

Wayward Girl's HOME THROWN OPEN SATURDAY

Governor Stanton Declares Institution Ready to Begin Its Work

THAT UNRULY PUPIL



ANGELES OUSTED BY CARRANZA: IS NAMED PRESIDENT BY VILLA

War Secretary Is Declared Provisional Ruler of Mexico Following His Discharge From the Cabinet

VILLA PREPARES NOTE TO AMERICAN PEOPLE

Sensation Is Created at Saltillo by News of Removal of Angeles From His Post-Huerta's Agents Are Notified

NIAGARA FALLS, Ont., June 26.—The Mexican delegation here received a telegram today from the council of their government at Saltillo, Tex., that General Angeles had been removed from the cabinet. The council also received a message from General Carranza, president of Mexico, appointing him provisional ruler of Mexico. The council also received a message from General Carranza, president of Mexico, appointing him provisional ruler of Mexico.

ASQUITH GIVES MILITANTS AUDIENCE IN RESIDENCE

Argues That If Women Got Votes They Would Not Be Satisfied

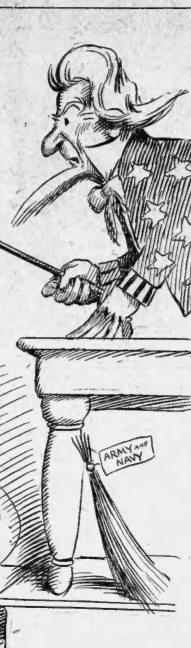
LONDON, June 26.—Premier Asquith today gave a private audience to a delegation of militant suffragettes. The delegation was led by Mrs. Pankhurst. The delegation was led by Mrs. Pankhurst. The delegation was led by Mrs. Pankhurst.

FRENCHMAN MAY LOSE RIGHTS OF CITIZENSHIP

Julius Raoul in Federal Prison Charged With Fraud in Getting Papers

ATLANTA, June 26.—Julius Raoul, a Frenchman, is in the federal prison in Atlanta. He is charged with fraud in getting his citizenship papers. He is charged with fraud in getting his citizenship papers. He is charged with fraud in getting his citizenship papers.

THAT UNRULY PUPIL



ANGELES OUSTED BY CARRANZA: IS NAMED PRESIDENT BY VILLA

War Secretary Is Declared Provisional Ruler of Mexico Following His Discharge From the Cabinet

VILLA PREPARES NOTE TO AMERICAN PEOPLE

Sensation Is Created at Saltillo by News of Removal of Angeles From His Post-Huerta's Agents Are Notified

NIAGARA FALLS, Ont., June 26.—The Mexican delegation here received a telegram today from the council of their government at Saltillo, Tex., that General Angeles had been removed from the cabinet. The council also received a message from General Carranza, president of Mexico, appointing him provisional ruler of Mexico. The council also received a message from General Carranza, president of Mexico, appointing him provisional ruler of Mexico.

ASQUITH GIVES MILITANTS AUDIENCE IN RESIDENCE

Argues That If Women Got Votes They Would Not Be Satisfied

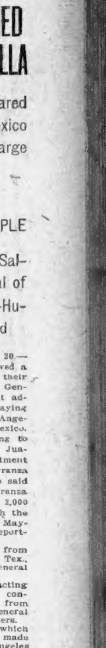
LONDON, June 26.—Premier Asquith today gave a private audience to a delegation of militant suffragettes. The delegation was led by Mrs. Pankhurst. The delegation was led by Mrs. Pankhurst. The delegation was led by Mrs. Pankhurst.

FRENCHMAN MAY LOSE RIGHTS OF CITIZENSHIP

Julius Raoul in Federal Prison Charged With Fraud in Getting Papers

ATLANTA, June 26.—Julius Raoul, a Frenchman, is in the federal prison in Atlanta. He is charged with fraud in getting his citizenship papers. He is charged with fraud in getting his citizenship papers. He is charged with fraud in getting his citizenship papers.

THAT UNRULY PUPIL



the kindness and sympathy displayed during the recent illness and death of their little girl, Jewell Bell.

Foley Cathartic Tablets are a specially good little regulator that keeps your system in perfect working order. No biliousness, no constipation, no distress after eating, no greasy, gassy taste, no belching. They stimulate the natural movement of the intestines, free them

of all clogging substances. A stout
man can sit down in it and feel
thinned out and more comfortable as a
result of their use. As a matter of fact,
each dealer has a few dealers every-
where.—(Adv.)

COLLIERADO

In Bigger Than Imagination

The result of fancy cannot prevail upon the
canvases of the mind like pictures that nature's
wide stretches have held in Nature, its broad-
out of the night sky.

There are many things in the best places in
Colorado is by the best road on the continent.
Take one of the fast trains of the Rock Island
line and your vacation the moment you
board the train.

We have all steel-equipment, superb din-
ing car service, very comfort. I know you'll
like them with the trip and the country.

Through rain daily from Atlanta via Memphis
and Kansas City.

We are now in FRANK BURTON at 10 N. Pryor
St., Chicago. Our representatives are travel agents
in all cities where we operate.

and an economical vacation, give you full information about hotels, camps, ranches, boarding places, and look after every detail of your trip. Write, phone or drop in for our fascinating picture books of wonderful Colorado. H. H. Hunt, D. F. A., Rock Island Lines, Phone Main 661.

Low fares June 1 to September 26.

—(Adv.).

Resorts, Atlantic City, N. J.

ROYAL PALACE

HOTEL & COTTAGES

on the Beach, Atlantic City, N.J.

OPEN ALL THE YEAR. CAPACITY 600
INDOOR SWIMMING. SWIMMING POOL
NEW AERIAL DANCE

Hotel DENNIS

ATLANTIC CITY, N. J.

The Call of the Sea

brings with it the joy of living and the irresistible charms of health and recreation.

HOTEL DENNIS

is situated directly on the oceanfront with unobstructed view of the sea from all public rooms and many guest chambers.

The appointments and equipment of this house make it an ideal Seaside Home.

CONDUCTED ON THE AMERICAN PLAN.
CANCELLER \$500. *Amusement*

Walter J. Buzby.

City NJ

HEAT AND AT HOME
 Nation, offers you
 it: cooling beverages,
 and serving the
 heating, fishing, etc.
 their bath and ap-
 plications.

USERS
 1. on application.
 2. at the National
 3. Always Open
 4. 5. 6. 7. 8. 9. 10. 11. 12. 13. 14. 15. 16. 17. 18. 19. 20. 21. 22. 23. 24. 25. 26. 27. 28. 29. 30. 31. 32. 33. 34. 35. 36. 37. 38. 39. 40. 41. 42. 43. 44. 45. 46. 47. 48. 49. 50. 51. 52. 53. 54. 55. 56. 57. 58. 59. 60. 61. 62. 63. 64. 65. 66. 67. 68. 69. 70. 71. 72. 73. 74. 75. 76. 77. 78. 79. 80. 81. 82. 83. 84. 85. 86. 87. 88. 89. 90. 91. 92. 93. 94. 95. 96. 97. 98. 99. 100. 101. 102. 103. 104. 105. 106. 107. 108. 109. 110. 111. 112. 113. 114. 115. 116. 117. 118. 119. 120. 121. 122. 123. 124. 125. 126. 127. 128. 129. 130. 131. 132. 133. 134. 135. 136. 137. 138. 139. 140. 141. 142. 143. 144. 145. 146. 147. 148. 149. 150. 151. 152. 153. 154. 155. 156. 157. 158. 159. 160. 161. 162. 163. 164. 165. 166. 167. 168. 169. 170. 171. 172. 173. 174. 175. 176. 177. 178. 179. 180. 181. 182. 183. 184. 185. 186. 187. 188. 189. 190. 191. 192. 193. 194. 195. 196. 197. 198. 199. 200. 201. 202. 203. 204. 205. 206. 207. 208. 209. 210. 211. 212. 213. 214. 215. 216. 217. 218. 219. 220. 221. 222. 223. 224. 225. 226. 227. 228. 229. 230. 231. 232. 233. 234. 235. 236. 237. 238. 239. 240. 241. 242. 243. 244. 245. 246. 247. 248. 249. 250. 251. 252. 253. 254. 255. 256. 257. 258. 259. 260. 261. 262. 263. 264. 265. 266. 267. 268. 269. 270. 271. 272. 273. 274. 275. 276. 277. 278. 279. 280. 281. 282. 283. 284. 285. 286. 287. 288. 289. 290. 291. 292. 293. 294. 295. 296. 297. 298. 299. 300. 301. 302. 303. 304. 305. 306. 307. 308. 309. 310. 311. 312. 313. 314. 315. 316. 317. 318. 319. 320. 321. 322. 323. 324. 325. 326. 327. 328. 329. 330. 331. 332. 333. 334. 335. 336. 337. 338. 339. 340. 341. 342. 343. 344. 345. 346. 347. 348. 349. 350. 351. 352. 353. 354. 355. 356. 357. 358. 359. 360. 361. 362. 363. 364. 365. 366. 367. 368. 369. 370. 371. 372. 373. 374. 375. 376. 377. 378. 379. 380. 381. 382. 383. 384. 385. 386. 387. 388. 389. 390. 391. 392. 393. 394. 395. 396. 397. 398. 399. 400. 401. 402. 403. 404. 405. 406. 407. 408. 409. 410. 411. 412. 413. 414. 415. 416. 417. 418. 419. 420. 421. 422. 423. 424. 425. 426. 427. 428. 429. 430. 431. 432. 433. 434. 435. 436. 437. 438. 439. 440. 441. 442. 443. 444. 445. 446. 447. 448. 449. 450. 451. 452. 453. 454. 455. 456. 457. 458. 459. 460. 461. 462. 463. 464. 465. 466. 467. 468. 469. 470. 471. 472. 473. 474. 475. 476. 477. 478. 479. 480. 481. 482. 483. 484. 485. 486. 487. 488. 489. 490. 491. 492. 493. 494. 495. 496. 497. 498. 499. 500. 501. 502. 503. 504. 505. 506. 507. 508. 509. 510. 511. 512. 513. 514. 515. 516. 517. 518. 519. 520. 521. 522. 523. 524. 525. 526. 527. 528. 529. 530. 531. 532. 533. 534. 535. 536. 537. 538. 539. 540. 541. 542. 543. 544. 545. 546. 547. 548. 549. 550. 551. 552. 553. 554. 555. 556. 557. 558. 559. 560. 561. 562. 563. 564. 565. 566. 567. 568. 569. 570. 571. 572. 573. 574. 575. 576. 577. 578. 579. 580. 581. 582. 583. 584. 585. 586. 587. 588. 589. 590. 591. 592. 593. 594. 595. 596. 597. 598. 599. 600. 601. 602. 603. 604. 605. 606. 607. 608. 609. 610. 611. 612. 613. 614. 615. 616. 617. 618. 619. 620. 621. 622. 623. 624. 625. 626. 627. 628. 629. 630. 631. 632. 633. 634. 635. 636. 637. 638. 639. 640. 641. 642. 643. 644. 645. 646. 647. 648. 649. 650. 651. 652. 653. 654. 655. 656. 657. 658. 659. 660. 661. 662. 663. 664. 665. 666. 667. 668. 669. 670. 671. 672. 673. 674. 675. 676. 677. 678. 679. 680. 681. 682. 683. 684. 685. 686. 687. 688. 689. 690. 691. 692. 693. 694. 695. 696. 697. 698. 699. 700. 701. 702. 703. 704. 705. 706. 707. 708. 709. 710. 711. 712. 713. 714. 715. 716. 717. 718. 719. 720. 721. 722. 723. 724. 725. 726. 727. 728. 729. 730. 731. 732. 733. 734. 735. 736. 737. 738. 739. 740. 741. 742. 743. 744. 745. 746. 747. 748. 749. 750. 751. 752. 753. 754. 755. 756. 757. 758. 759. 760. 761. 762. 763. 764. 765. 766. 767. 768. 769. 770. 771. 772. 773. 774. 775. 776. 777. 778. 779. 780. 781. 782. 783. 784. 785. 786. 787. 788. 789. 790. 791. 792. 793. 794. 795. 796. 797. 798. 799. 800. 801. 802. 803. 804. 805. 806. 807. 808. 809. 810. 811. 812. 813. 814. 815. 816. 817. 818. 819. 820. 821.

GOOD \$6.00

DAYS U VILLE BEACH JURSION

Y, JUNE 30
BOARD
AL TRAIN
and Coaches

Depot) . . . 6 P. M.
. 8 A. M.
 the Beach. No delay at
 ing on regular trains

ER, A. G. P. A.,

NTA, GA.

Notices received after 12 o'clock Friday arrive too late for use on this page. All corrections should be in by the same time.

PRESBYTERIAN CHANGES HAVE BECOME EFFECTIVE

Dr. Charles I. Thompson, Secretary of Home Missions, Resigns as Agreed

NEW YORK, June 20.—The annual meeting of the Presbyterian board of Christian education in America, held at the Hotel Marlborough, opened this morning with the invocation of the Rev. Dr. Charles L. Thompson for many years secretary of the Presbyterian board of Christian education in America, and chairman of the home missions council which includes the board of Christian education in America, has remained in accordance with the custom of the board, the general assembly of the Presbyterian church in America, and the annual conference of the United Methodist church, have just been chosen in his place. Only after a long and arduous struggle, after P. Fullerton, of St. Louis, is to have charge of Presbyterian church extension work in the United States, and in St. Louis, which city is for the first time to have a representative on the board of the Presbyterian church—the largest of the American churches. The delegates chosen are the Rev. Dr. John Blount and Joseph P. McFay.

As two committees have been named to raise, if possible, the large sum of money needed to carry on the work of the American and foreign Presbyterian mission societies, the delegates have been urged behind for the first time in fifteen years to make a special effort to clear the debt in its recent history.

The changes in this home board come as a result of the action of the general mission interests in the middle west which have been the cause of a long and demanding larger vote and more voice in the general assembly of the Presbyterian church. Twelve knew more about than officers of the work. The action of the general assembly of the Presbyterian church in America, which is an extension work, will be a landmark in the history of the Presbyterian church in St. Louis, which city is for the first time to have a representative on the board of the Presbyterian church itself. Another change is the creation of a new Presbyterian mission society, which is connected with the board, but is not a part of the general assembly of the church in America. It will have one delegate from each synod and is to have a representative on the board of the Presbyterian church in America. It will be organized for more than two years, being to have a representative on the board of the Presbyterian church in America.

Woman Labor in Europe

As some one said the other day, How different the question of the work of women is treated in European countries from the way it is in American states? In Europe fourteen of the leading nations have entirely prohibited the work of women between certain periods of night by international treaty. This treaty was

the result of a conference called by the International Association for Labor Legislation in Berne in 1906. To this conference delegates were sent by the governments of Austria, Belgium, Denmark, France, Germany, Great Britain, Holland, Hungary, Italy, Luxembourg

[illegible]

SOUTH PRYOR STREET—Bible study from 9:45 to 10:45. Communion and fellowship from 11 to 11:30. Preaching at 11:30 a. m. and 7:30 p. m. by J. A. Harding. Prayer meeting Wednesday evening.

UNIVERSALIST
FIRST CHURCH—16 East Harris street (near Peachtree). Pastor, Rev. Fred A. Line. Services: 10:30 a. m., Sunday school; 11:00 a. m., Communion and fellowship; 11:45 to 11:15, Preaching at 11:30 a. m. S. H. Hall.

FIRST UNIVERSALIST CHURCH, 10 East Harris street. Pastor, Rev Fred A. Line. Sunday school 9:45. Preaching by the pastor at 11 o'clock. Evening services have been discontinued until fall.

LUTHERAN
ENGLISH LUTHERAN OF THE REDEEMER
 —Trinity avenue and Capitol place. Rev. W. C. Schnauffer, Jr., pastor. Services at 11 a. m. and 8 p. m. Bible school at 9:45 a. m.
ST. JOHN'S GERMAN EVANGELICAL
 Forsyth and Garnett streets. German service at 11 a. m. Bible school at 9:45 a. m.

CHRISTIAN

FIRST—Sermons at 11 and 7:30 o'clock by the minister, Dr. L. O. Bricker. Bible school at 8:30.

WEST END—Gordon and Dunn streets. William O. Foster, minister. Preaching at 10:

EDUCATIONAL

Wesleyan
College

FOR YOUNG WOMEN
This is the oldest chartered college for young women in America.

It is as modern in purpose and well equipped in point of comforts as it is old in years.

Situated in the delightful healthful hills of Central Georgia where

Schools in Literature, Languages, Science, Art and Music under direction of capable masters.

Home influences, athletic and social features that develop the broad view of life under safe conditions. Terms remarkably low.

Catalog and information upon

C. R. JENKINS, President,
MACON, GA.

| | | |
|-----------------|----------|-----|
| Welchance, c.f. | Corb. | 13. |
| Jennings, ss. | Flick. | 28. |
| Planagan, rf. | Graff. | 15. |
| Tyree, c. | Graham. | c. |
| Dunn, c. | Street. | c. |
| Doeschner, p. | Sline. | p. |
| Perryman, p. | Quaders. | p. |

J. K. Orr Leading Two Sets to One in Tennis Finals Augusta Tourney

DIANA DILLPICKLES IN "DISCOVERED---A HAMMOCK"

A 4-REEL "SCREECHER" FILM



WE SPORTLIGHT BY GRANTLAND RICE

ANCIENT HISTORY.
How speed the ages on their way,
How old Doc Time must flutter by,
How brief, alas! each vanished day
As centuries arise and die.
For here I see it jotted down
In history's famed downs and ups,
Where Babylon was quite a town—
And Uncle Sam held all the cups.

But yesterday J. Caesar cleaned
The pennant up in vanished Gaul;
Yesterday Kid David bearded
Goliath with his swiftest ball;
I remember from the molar
Of Thines That Were, the Roman shield;
How Cleopatra knocked old cold—
And Uncle Sam mopped up the field.

Within my den at night I read
Famous legends of the years;
They are on age I lamp the creed
Of Hector's fall and Helen's tears.
I see beyond Time's fading ridge
I trail each hero's downs and ups;
When old Horatius held the bridge—
And Uncle Sam held all the cups.

WHAT, INDEED?
What can I make of it, Watson? Frankly, it's beyond us—unless
We, the moderns, have decided that it is high time for the prophecy
to be true, where "the line shall be first and the first shall be in the
world division."
When the minstrel dived headlong into second place, we marveled, but
we had all miles must know an exception.
When the lowly Brown emerged from the rut and swept into the first
place, we marveled further, but let it go at that.
When the Cardinals waded from last place we began to exhibit mis-
givings, and when they kept on until they had become tightly wedged in
the first place, we marveled no more.

THE EQUALITY OF MAN.
The fact of the equality may be after all forecasting the promised equal-
ity of the future. The fact of the equality of man is the basis of all
progress. We have the right of the Socialists and the upsurge of the Militants
and the fact of the equality of man is the basis of all progress. We have the right of the Socialists and the upsurge of the Militants
and the fact of the equality of man is the basis of all progress. We have the right of the Socialists and the upsurge of the Militants

THE GIDDY UPSET.
The fact of the equality of man is the basis of all progress. We have the right of the Socialists and the upsurge of the Militants
and the fact of the equality of man is the basis of all progress. We have the right of the Socialists and the upsurge of the Militants
and the fact of the equality of man is the basis of all progress. We have the right of the Socialists and the upsurge of the Militants

HARD ON THE CHAMPS.
The fact of the equality of man is the basis of all progress. We have the right of the Socialists and the upsurge of the Militants
and the fact of the equality of man is the basis of all progress. We have the right of the Socialists and the upsurge of the Militants
and the fact of the equality of man is the basis of all progress. We have the right of the Socialists and the upsurge of the Militants

SHARP SPORT JABS.
The fact of the equality of man is the basis of all progress. We have the right of the Socialists and the upsurge of the Militants
and the fact of the equality of man is the basis of all progress. We have the right of the Socialists and the upsurge of the Militants
and the fact of the equality of man is the basis of all progress. We have the right of the Socialists and the upsurge of the Militants

SHARP SPORT JABS.
The fact of the equality of man is the basis of all progress. We have the right of the Socialists and the upsurge of the Militants
and the fact of the equality of man is the basis of all progress. We have the right of the Socialists and the upsurge of the Militants
and the fact of the equality of man is the basis of all progress. We have the right of the Socialists and the upsurge of the Militants

SHARP SPORT JABS.
The fact of the equality of man is the basis of all progress. We have the right of the Socialists and the upsurge of the Militants
and the fact of the equality of man is the basis of all progress. We have the right of the Socialists and the upsurge of the Militants
and the fact of the equality of man is the basis of all progress. We have the right of the Socialists and the upsurge of the Militants

SHARP SPORT JABS.
The fact of the equality of man is the basis of all progress. We have the right of the Socialists and the upsurge of the Militants
and the fact of the equality of man is the basis of all progress. We have the right of the Socialists and the upsurge of the Militants
and the fact of the equality of man is the basis of all progress. We have the right of the Socialists and the upsurge of the Militants

SHARP SPORT JABS.
The fact of the equality of man is the basis of all progress. We have the right of the Socialists and the upsurge of the Militants
and the fact of the equality of man is the basis of all progress. We have the right of the Socialists and the upsurge of the Militants
and the fact of the equality of man is the basis of all progress. We have the right of the Socialists and the upsurge of the Militants

SHARP SPORT JABS.
The fact of the equality of man is the basis of all progress. We have the right of the Socialists and the upsurge of the Militants
and the fact of the equality of man is the basis of all progress. We have the right of the Socialists and the upsurge of the Militants
and the fact of the equality of man is the basis of all progress. We have the right of the Socialists and the upsurge of the Militants

Orr in Tennis Finals Today

Atlanta Player Won Two of Three Sets Friday, When Darkness Stopped Play—Final Match Today

(Special Dispatch to The Journal)
AUGUSTA, Ga., June 20.—After a day's interruption on account of rain play was resumed in the South Atlantic States tennis tournament Friday morning, and the several matches which were pulled through during the day furnished sessions. In the semi-final match of Philadelphia, easily defeated Jennings of Atlanta, with a loss of but two games. The other semi-final match between J. K. Orr, Jr., of Atlanta, and G. W. Waring of Columbia, resulted in a win for Orr in three desperately contested sets.

The final between Orr and Bain were begun at 5:30 in the afternoon and at the end of the third set, with Orr leading two sets to one, darkness intervened and play was discontinued until this morning. In doubles the semi-finals were reached and these two matches, Carter and Orr vs. White and Redfern and Waring and Waring vs. Phinney and Orr, will be played Saturday. The winners of the two matches will meet in the final this afternoon.

Several interesting matches were played in the consolation singles. Mark Waring lost a hard fought match to Nurnberger, a local player, which went the limit of three sets. The match between Orr and W. Waring was a clash between the back court and net style of play. By the splendid accuracy of his backhand shots and John Orr won the first set from Waring 6-4 Thursday morning when rain interrupted the play. Friday morning the South Carolinian was forced to begin on service and at the net he won a set from the Atlanta player 4-1, bringing matters to a tie. Orr took the lead in the deciding set 6-4, but Waring won after the next two games and set 3-4, but was checked by the deadly accuracy of Orr's backhand shots and the Atlanta player pulled out the set at 6-4, thus coming through to the final. Orr's game throughout this match was a marvel of steadiness and accuracy and the deceptiveness of his strokes was a small factor in his easy victory.

Time and again the Columbia player's small backhand shot which appeared to be going out of the bounds, only to see them strike within the boundaries of his court, was a source of annoyance to Orr. Orr continued to display his accuracy in the final set, but Bain kept him in a different style of play to contend with. Bain's play was a back court and depends upon long drives far back into his opponent's territory, seldom coming to the net.

The Atlanta player won the first two sets by superior steadiness and wonderful play. In the third set Bain brought out his reserve strength and finally checked his opponent, winning at 6-4. Bain was down with one point of winning the second set only to be thwarted by a never-made attempt of the doughty little Georgian.

During the past week the playing of J. K. Orr, Jr., has proved the sensation of the tournament. Small, thin and extremely round shouldered, with apparently no physical strength, it is hard to say which is the greater, his accuracy or his endurance. In an ordinary contest one would expect him to be exhausted after a few hours of play. When put to it he opens up and he covers the court without spending up except on rare occasions. Orr went through the tournament without a loss of a set to the semi-finals, defeating Elmer Waring, of Memphis, in the first round. In the semi-final match with Waring Waring dropped one set to his opponent's aggressiveness and his own policy of watchful waiting.

Score of the matches played yesterday follows:
SEMI-FINAL ROUND.
Bain defeated Jennings, 6-2, 6-0.
Orr defeated Waring, 6-4, 4-6, 6-3.
FINALS.
Orr vs. Bain. Orr leading two sets to one.

DOUBLES SECOND ROUND.
White and Redfern defeated Harper and Harper, 6-2, 6-0.
Carter and Orr defeated Jennings and Matthews, 6-1, 6-2.
White and Redfern defeated Bain and Campbell, 6-2, 7-5.

Waring and Waring defeated Wall and Heister, 6-2, 6-1.
Phinney and Gary defeated Lee and Kennedy, 6-4, 8-7.

CONSOLE SINGLES—THIRD ROUND.
Nurnberger defeated Waring, 5-6, 6-3, 6-3.

Augusta Protests
All Lost Games
CHARLESTON, S. C., June 20.—Acting on instructions received from President Kahlisch, of the Augusta club, Manager Broutner is protesting every game played in which Outsideur Shaw is barred by a ruling of President Cordish that Shaw is not eligible. Thursday's game was protested, but as the contest ended in a victory for Augusta, Broutner withdrew the protest. He protested Friday's game.

TODAY'S LUCKY FAN



If the fan to whom arrow as you look in the above cut will appear at The Journal office with copy of paper containing cut before time for today's game, he will be given a free ticket to the game.

Athletes Sail For England

NEW YORK, June 20.—The advance guard of American athletes who will compete in England for the British amateur championship next month, sailed Friday. The departing athletes were Harry Smith, the American two-mile champion, and Hume Baker, of the New York Athletic club. Smith will compete in the four-mile run, while Baker will be a starter in the half-mile.

Fighters Post Large Forfeits

LONDON, June 20.—"Gunboat" Smith, the American heavyweight pugilist, and Georges Carpentier, the French heavyweight champion, deposited \$5,000 each as guarantees in connection with their twenty-round fight to take place at Olympia, July 16.

WHAT BIG LEAGUES DID YESTERDAY

Babe Becker hit a home run in the game between the Cubs and Phillies. It was his third in three successive days. Yesterday the Cubs hit for the circuit by getting the tenth, with the score tied.

Dave Robertson was the hitting sensation of the Giants-Reds game at the Polo Grounds. The Ex-Gull nailed three four-run trips to the plate.

John Collins and Russell Blackburne carried off batting honors in the White Sox-Reds game in Chicago. Each made 3. Blackburne was up three times, and Collins four. Speaker has a triple in three times up.

Three double plays by the Athletics did not ward off a defeat at the hands of the Loags. Rickie's men gathered off five runs in the first inning. Frequent errors by the Loags helped. Clyde Ware had two hits in three times up.

Boothling passed Cobb and Crawford purposely in the tenth inning of the game between the Senators and Tigers, then Yeach scored, securing the winning run. The game was tied 2-2 at that time. Yeach hit, but he was up five times.

The Phillies lost to the Cubs through an error by Ireland, a recruit infielder in the center. The Dusters are looking away game. Frequent errors by the Loags helped. In their defeat by the Senators, Red had been tried several times, but with indifferent results.

Baseball Heads Meet in N. Y.

International League Asks That Draft Rule Be Removed In Order to Buck Federal Circuit

NEW YORK, June 20.—An increase in the number of major leagues in organized baseball by the removal of the draft rule from the Class AA league is one of the methods said to be under consideration by the national commission in its war against the Federal league. At its meeting it is expected that the national commission will grant the demand of President E. G. Barrow, of the International league, and Manager Dumas, of the Baltimore club, of the organization, for the removal of the draft rule. The International league officials claim that the Federal league has lost its best talent for patronage in their territory. They argue that with the draft rule removed the International league will assume the classification of a major league and thereby be in a better position to combat the Federal league opposition. This same argument applies to the American association and to the Pacific Coast league, the other two Class AA leagues, and should the demand of the International league be granted, these organizations are almost certain to make similar requests to be classed as majors.

The National league club owners, in session here today, await word of the action of the national commission as to plans for a concerted action against the Federal league. It is said that while there is much opposition in the National league to the demand of the International for major league recognition, it will die out if the supreme court of baseball wills that it is to be the best interests of all concerned to remove the draft rule from one or all of the Class AA circuits.

President Ben Johnson, of the American league, is said to be in favor of ratifying the International to major league prominence, and President Tener, it is reported, is inclined to side with President Johnson, if no better means can be devised to maintain the supremacy of organized baseball. The attitude of Chairman Harry Herrmann, of the national commission, cannot be learned, but he is known to favor any plan, however drastic, to stop the growth of the new "outlaw" Federal league.

Chicks Sign Burke

MEMPHIS, Tenn., June 20.—James Burke, an outfielder, who was a member of the Knoxville team of the Appalachian league, was signed Friday by the Memphis club of the Southern association.

Yale Defeats Harvard Crew

Line One Foot Ahead of Harvard in Greatest Race on Thames

NEW LONDON, June 20.—Yale won the four-mile varsity race from Harvard Friday by one foot, after the most sensational race that has ever been rowed over the four-mile course on the Thames river. It was first believed by the judges that Harvard had won, but after several minutes of conferring the judges decided that Yale had been the victor by one foot. Harvard took the lead at the start and held it until near the second mile, when Yale forced ahead. The Crimson crew had a slight lead at the three-mile mark. Nearing the finish the two crews were on even terms.

The official time of the varsity race was Yale, 21:18; Harvard, 21:18.5. As the starting signal was given Yale appeared to get the quickest grip on the water and shot forward with Harvard a few feet in the rear. Both strokes set a pace of close to 48 to the minute for a short distance and then slowed down for the long race ahead. As the first mile flags slipped behind, Yale had increased her lead to three-quarters of a length, using 30 strokes to Harvard's 32. Half way to the finish Yale held her three-quarters length lead, although Harvard was rowing four strokes to the minute faster.

Between the two and a half and three-mile flags the shells ran into choppy water and both hung badly between strokes.

In the final fight, the two crews held their rowing form in splendid fashion and the two shells crossed the line as though driven by motors. Chanier struck 39 for Harvard to Appleton's 38 for Yale.

Talbotton Beat Woodland

TALBOTTON, Ga., June 20.—In a fast game of ball here Friday Talbotton defeated Woodland, 3 to 1. Ray Part pitched for Woodland and John O'Rourke for Talbotton. Hans Mahone, for Talbotton, batted a home run in the fifth.

Carrollton Won Third

CARROLLTON, Ga., June 20.—Carrollton defeated Griffin here in a fast game Friday afternoon by the score of 8 to 5. This game was the last of a series of three, all of the games being in Carrollton's favor.

Batteries: Carrollton, Carmichael and Stewart, Griffin, Craven and Putnam.

THE most important news relating to getting the best returns for the money you spend will be found in today's Journal advertisements.

BASEBALL Today
Atlanta vs. Chattanooga
PONCE DE LEON PARK
2 Games, First Game 2:30

MORE FAVORABLE WEATHER CAUSED BREAK IN COTTON

Market in New York Closed 8 to 15 Points Down from the Previous Close

(By Associated Press.) NEW YORK, June 20.—The cotton market today with better weather caused a break in the cotton market. The market was closed 8 to 15 points down from the previous close. The market was closed 8 to 15 points down from the previous close. The market was closed 8 to 15 points down from the previous close.

NEW YORK COTTON

Table with 2 columns: Month, Price. Rows for Jan, Feb, Mar, Apr, May, Jun, Jul, Aug, Sep, Oct, Nov, Dec.

NEW ORLEANS COTTON

Table with 2 columns: Month, Price. Rows for Jan, Feb, Mar, Apr, May, Jun, Jul, Aug, Sep, Oct, Nov, Dec.

NEW ORLEANS COTTON

Table with 2 columns: Month, Price. Rows for Jan, Feb, Mar, Apr, May, Jun, Jul, Aug, Sep, Oct, Nov, Dec.

NEW ORLEANS COTTON

Table with 2 columns: Month, Price. Rows for Jan, Feb, Mar, Apr, May, Jun, Jul, Aug, Sep, Oct, Nov, Dec.

NEW ORLEANS COTTON

Table with 2 columns: Month, Price. Rows for Jan, Feb, Mar, Apr, May, Jun, Jul, Aug, Sep, Oct, Nov, Dec.

NEW ORLEANS COTTON

Table with 2 columns: Month, Price. Rows for Jan, Feb, Mar, Apr, May, Jun, Jul, Aug, Sep, Oct, Nov, Dec.

NEW ORLEANS COTTON

Table with 2 columns: Month, Price. Rows for Jan, Feb, Mar, Apr, May, Jun, Jul, Aug, Sep, Oct, Nov, Dec.

NEW ORLEANS COTTON

Table with 2 columns: Month, Price. Rows for Jan, Feb, Mar, Apr, May, Jun, Jul, Aug, Sep, Oct, Nov, Dec.

NEW ORLEANS COTTON

Table with 2 columns: Month, Price. Rows for Jan, Feb, Mar, Apr, May, Jun, Jul, Aug, Sep, Oct, Nov, Dec.

NEW ORLEANS COTTON

Table with 2 columns: Month, Price. Rows for Jan, Feb, Mar, Apr, May, Jun, Jul, Aug, Sep, Oct, Nov, Dec.

NEW ORLEANS COTTON

Table with 2 columns: Month, Price. Rows for Jan, Feb, Mar, Apr, May, Jun, Jul, Aug, Sep, Oct, Nov, Dec.

NEW ORLEANS COTTON

Table with 2 columns: Month, Price. Rows for Jan, Feb, Mar, Apr, May, Jun, Jul, Aug, Sep, Oct, Nov, Dec.

NEW ORLEANS COTTON

Table with 2 columns: Month, Price. Rows for Jan, Feb, Mar, Apr, May, Jun, Jul, Aug, Sep, Oct, Nov, Dec.

Atlanta Markets

ATLANTA COTTON ATLANTA, Ga., June 20.—Cotton by wagon.

DERESSED POULTRY

Hen, 18 to 19 lbs. 12 to 13; 20 to 21 lbs. 13 to 14; 22 to 23 lbs. 14 to 15; 24 to 25 lbs. 15 to 16; 26 to 27 lbs. 16 to 17; 28 to 29 lbs. 17 to 18; 30 to 31 lbs. 18 to 19; 32 to 33 lbs. 19 to 20; 34 to 35 lbs. 20 to 21; 36 to 37 lbs. 21 to 22; 38 to 39 lbs. 22 to 23; 40 to 41 lbs. 23 to 24; 42 to 43 lbs. 24 to 25; 44 to 45 lbs. 25 to 26; 46 to 47 lbs. 26 to 27; 48 to 49 lbs. 27 to 28; 50 to 51 lbs. 28 to 29; 52 to 53 lbs. 29 to 30; 54 to 55 lbs. 30 to 31; 56 to 57 lbs. 31 to 32; 58 to 59 lbs. 32 to 33; 60 to 61 lbs. 33 to 34; 62 to 63 lbs. 34 to 35; 64 to 65 lbs. 35 to 36; 66 to 67 lbs. 36 to 37; 68 to 69 lbs. 37 to 38; 70 to 71 lbs. 38 to 39; 72 to 73 lbs. 39 to 40; 74 to 75 lbs. 40 to 41; 76 to 77 lbs. 41 to 42; 78 to 79 lbs. 42 to 43; 80 to 81 lbs. 43 to 44; 82 to 83 lbs. 44 to 45; 84 to 85 lbs. 45 to 46; 86 to 87 lbs. 46 to 47; 88 to 89 lbs. 47 to 48; 90 to 91 lbs. 48 to 49; 92 to 93 lbs. 49 to 50; 94 to 95 lbs. 50 to 51; 96 to 97 lbs. 51 to 52; 98 to 99 lbs. 52 to 53; 100 to 101 lbs. 53 to 54; 102 to 103 lbs. 54 to 55; 104 to 105 lbs. 55 to 56; 106 to 107 lbs. 56 to 57; 108 to 109 lbs. 57 to 58; 110 to 111 lbs. 58 to 59; 112 to 113 lbs. 59 to 60; 114 to 115 lbs. 60 to 61; 116 to 117 lbs. 61 to 62; 118 to 119 lbs. 62 to 63; 120 to 121 lbs. 63 to 64; 122 to 123 lbs. 64 to 65; 124 to 125 lbs. 65 to 66; 126 to 127 lbs. 66 to 67; 128 to 129 lbs. 67 to 68; 130 to 131 lbs. 68 to 69; 132 to 133 lbs. 69 to 70; 134 to 135 lbs. 70 to 71; 136 to 137 lbs. 71 to 72; 138 to 139 lbs. 72 to 73; 140 to 141 lbs. 73 to 74; 142 to 143 lbs. 74 to 75; 144 to 145 lbs. 75 to 76; 146 to 147 lbs. 76 to 77; 148 to 149 lbs. 77 to 78; 150 to 151 lbs. 78 to 79; 152 to 153 lbs. 79 to 80; 154 to 155 lbs. 80 to 81; 156 to 157 lbs. 81 to 82; 158 to 159 lbs. 82 to 83; 160 to 161 lbs. 83 to 84; 162 to 163 lbs. 84 to 85; 164 to 165 lbs. 85 to 86; 166 to 167 lbs. 86 to 87; 168 to 169 lbs. 87 to 88; 170 to 171 lbs. 88 to 89; 172 to 173 lbs. 89 to 90; 174 to 175 lbs. 90 to 91; 176 to 177 lbs. 91 to 92; 178 to 179 lbs. 92 to 93; 180 to 181 lbs. 93 to 94; 182 to 183 lbs. 94 to 95; 184 to 185 lbs. 95 to 96; 186 to 187 lbs. 96 to 97; 188 to 189 lbs. 97 to 98; 190 to 191 lbs. 98 to 99; 192 to 193 lbs. 99 to 100; 194 to 195 lbs. 100 to 101; 196 to 197 lbs. 101 to 102; 198 to 199 lbs. 102 to 103; 200 to 201 lbs. 103 to 104; 202 to 203 lbs. 104 to 105; 204 to 205 lbs. 105 to 106; 206 to 207 lbs. 106 to 107; 208 to 209 lbs. 107 to 108; 210 to 211 lbs. 108 to 109; 212 to 213 lbs. 109 to 110; 214 to 215 lbs. 110 to 111; 216 to 217 lbs. 111 to 112; 218 to 219 lbs. 112 to 113; 220 to 221 lbs. 113 to 114; 222 to 223 lbs. 114 to 115; 224 to 225 lbs. 115 to 116; 226 to 227 lbs. 116 to 117; 228 to 229 lbs. 117 to 118; 230 to 231 lbs. 118 to 119; 232 to 233 lbs. 119 to 120; 234 to 235 lbs. 120 to 121; 236 to 237 lbs. 121 to 122; 238 to 239 lbs. 122 to 123; 240 to 241 lbs. 123 to 124; 242 to 243 lbs. 124 to 125; 244 to 245 lbs. 125 to 126; 246 to 247 lbs. 126 to 127; 248 to 249 lbs. 127 to 128; 250 to 251 lbs. 128 to 129; 252 to 253 lbs. 129 to 130; 254 to 255 lbs. 130 to 131; 256 to 257 lbs. 131 to 132; 258 to 259 lbs. 132 to 133; 260 to 261 lbs. 133 to 134; 262 to 263 lbs. 134 to 135; 264 to 265 lbs. 135 to 136; 266 to 267 lbs. 136 to 137; 268 to 269 lbs. 137 to 138; 270 to 271 lbs. 138 to 139; 272 to 273 lbs. 139 to 140; 274 to 275 lbs. 140 to 141; 276 to 277 lbs. 141 to 142; 278 to 279 lbs. 142 to 143; 280 to 281 lbs. 143 to 144; 282 to 283 lbs. 144 to 145; 284 to 285 lbs. 145 to 146; 286 to 287 lbs. 146 to 147; 288 to 289 lbs. 147 to 148; 290 to 291 lbs. 148 to 149; 292 to 293 lbs. 149 to 150; 294 to 295 lbs. 150 to 151; 296 to 297 lbs. 151 to 152; 298 to 299 lbs. 152 to 153; 300 to 301 lbs. 153 to 154; 302 to 303 lbs. 154 to 155; 304 to 305 lbs. 155 to 156; 306 to 307 lbs. 156 to 157; 308 to 309 lbs. 157 to 158; 310 to 311 lbs. 158 to 159; 312 to 313 lbs. 159 to 160; 314 to 315 lbs. 160 to 161; 316 to 317 lbs. 161 to 162; 318 to 319 lbs. 162 to 163; 320 to 321 lbs. 163 to 164; 322 to 323 lbs. 164 to 165; 324 to 325 lbs. 165 to 166; 326 to 327 lbs. 166 to 167; 328 to 329 lbs. 167 to 168; 330 to 331 lbs. 168 to 169; 332 to 333 lbs. 169 to 170; 334 to 335 lbs. 170 to 171; 336 to 337 lbs. 171 to 172; 338 to 339 lbs. 172 to 173; 340 to 341 lbs. 173 to 174; 342 to 343 lbs. 174 to 175; 344 to 345 lbs. 175 to 176; 346 to 347 lbs. 176 to 177; 348 to 349 lbs. 177 to 178; 350 to 351 lbs. 178 to 179; 352 to 353 lbs. 179 to 180; 354 to 355 lbs. 180 to 181; 356 to 357 lbs. 181 to 182; 358 to 359 lbs. 182 to 183; 360 to 361 lbs. 183 to 184; 362 to 363 lbs. 184 to 185; 364 to 365 lbs. 185 to 186; 366 to 367 lbs. 186 to 187; 368 to 369 lbs. 187 to 188; 370 to 371 lbs. 188 to 189; 372 to 373 lbs. 189 to 190; 374 to 375 lbs. 190 to 191; 376 to 377 lbs. 191 to 192; 378 to 379 lbs. 192 to 193; 380 to 381 lbs. 193 to 194; 382 to 383 lbs. 194 to 195; 384 to 385 lbs. 195 to 196; 386 to 387 lbs. 196 to 197; 388 to 389 lbs. 197 to 198; 390 to 391 lbs. 198 to 199; 392 to 393 lbs. 199 to 200; 394 to 395 lbs. 200 to 201; 396 to 397 lbs. 201 to 202; 398 to 399 lbs. 202 to 203; 400 to 401 lbs. 203 to 204; 402 to 403 lbs. 204 to 205; 404 to 405 lbs. 205 to 206; 406 to 407 lbs. 206 to 207; 408 to 409 lbs. 207 to 208; 410 to 411 lbs. 208 to 209; 412 to 413 lbs. 209 to 210; 414 to 415 lbs. 210 to 211; 416 to 417 lbs. 211 to 212; 418 to 419 lbs. 212 to 213; 420 to 421 lbs. 213 to 214; 422 to 423 lbs. 214 to 215; 424 to 425 lbs. 215 to 216; 426 to 427 lbs. 216 to 217; 428 to 429 lbs. 217 to 218; 430 to 431 lbs. 218 to 219; 432 to 433 lbs. 219 to 220; 434 to 435 lbs. 220 to 221; 436 to 437 lbs. 221 to 222; 438 to 439 lbs. 222 to 223; 440 to 441 lbs. 223 to 224; 442 to 443 lbs. 224 to 225; 444 to 445 lbs. 225 to 226; 446 to 447 lbs. 226 to 227; 448 to 449 lbs. 227 to 228; 450 to 451 lbs. 228 to 229; 452 to 453 lbs. 229 to 230; 454 to 455 lbs. 230 to 231; 456 to 457 lbs. 231 to 232; 458 to 459 lbs. 232 to 233; 460 to 461 lbs. 233 to 234; 462 to 463 lbs. 234 to 235; 464 to 465 lbs. 235 to 236; 466 to 467 lbs. 236 to 237; 468 to 469 lbs. 237 to 238; 470 to 471 lbs. 238 to 239; 472 to 473 lbs. 239 to 240; 474 to 475 lbs. 240 to 241; 476 to 477 lbs. 241 to 242; 478 to 479 lbs. 242 to 243; 480 to 481 lbs. 243 to 244; 482 to 483 lbs. 244 to 245; 484 to 485 lbs. 245 to 246; 486 to 487 lbs. 246 to 247; 488 to 489 lbs. 247 to 248; 490 to 491 lbs. 248 to 249; 492 to 493 lbs. 249 to 250; 494 to 495 lbs. 250 to 251; 496 to 497 lbs. 251 to 252; 498 to 499 lbs. 252 to 253; 500 to 501 lbs. 253 to 254; 502 to 503 lbs. 254 to 255; 504 to 505 lbs. 255 to 256; 506 to 507 lbs. 256 to 257; 508 to 509 lbs. 257 to 258; 510 to 511 lbs. 258 to 259; 512 to 513 lbs. 259 to 260; 514 to 515 lbs. 260 to 261; 516 to 517 lbs. 261 to 262; 518 to 519 lbs. 262 to 263; 520 to 521 lbs. 263 to 264; 522 to 523 lbs. 264 to 265; 524 to 525 lbs. 265 to 266; 526 to 527 lbs. 266 to 267; 528 to 529 lbs. 267 to 268; 530 to 531 lbs. 268 to 269; 532 to 533 lbs. 269 to 270; 534 to 535 lbs. 270 to 271; 536 to 537 lbs. 271 to 272; 538 to 539 lbs. 272 to 273; 540 to 541 lbs. 273 to 274; 542 to 543 lbs. 274 to 275; 544 to 545 lbs. 275 to 276; 546 to 547 lbs. 276 to 277; 548 to 549 lbs. 277 to 278; 550 to 551 lbs. 278 to 279; 552 to 553 lbs. 279 to 280; 554 to 555 lbs. 280 to 281; 556 to 557 lbs. 281 to 282; 558 to 559 lbs. 282 to 283; 560 to 561 lbs. 283 to 284; 562 to 563 lbs. 284 to 285; 564 to 565 lbs. 285 to 286; 566 to 567 lbs. 286 to 287; 568 to 569 lbs. 287 to 288; 570 to 571 lbs. 288 to 289; 572 to 573 lbs. 289 to 290; 574 to 575 lbs. 290 to 291; 576 to 577 lbs. 291 to 292; 578 to 579 lbs. 292 to 293; 580 to 581 lbs. 293 to 294; 582 to 583 lbs. 294 to 295; 584 to 585 lbs. 295 to 296; 586 to 587 lbs. 296 to 297; 588 to 589 lbs. 297 to 298; 590 to 591 lbs. 298 to 299; 592 to 593 lbs. 299 to 300; 594 to 595 lbs. 300 to 301; 596 to 597 lbs. 301 to 302; 598 to 599 lbs. 302 to 303; 600 to 601 lbs. 303 to 304; 602 to 603 lbs. 304 to 305; 604 to 605 lbs. 305 to 306; 606 to 607 lbs. 306 to 307; 608 to 609 lbs. 307 to 308; 610 to 611 lbs. 308 to 309; 612 to 613 lbs. 309 to 310; 614 to 615 lbs. 310 to 311; 616 to 617 lbs. 311 to 312; 618 to 619 lbs. 312 to 313; 620 to 621 lbs. 313 to 314; 622 to 623 lbs. 314 to 315; 624 to 625 lbs. 315 to 316; 626 to 627 lbs. 316 to 317; 628 to 629 lbs. 317 to 318; 630 to 631 lbs. 318 to 319; 632 to 633 lbs. 319 to 320; 634 to 635 lbs. 320 to 321; 636 to 637 lbs. 321 to 322; 638 to 639 lbs. 322 to 323; 640 to 641 lbs. 323 to 324; 642 to 643 lbs. 324 to 325; 644 to 645 lbs. 325 to 326; 646 to 647 lbs. 326 to 327; 648 to 649 lbs. 327 to 328; 650 to 651 lbs. 328 to 329; 652 to 653 lbs. 329 to 330; 654 to 655 lbs. 330 to 331; 656 to 657 lbs. 331 to 332; 658 to 659 lbs. 332 to 333; 660 to 661 lbs. 333 to 334; 662 to 663 lbs. 334 to 335; 664 to 665 lbs. 335 to 336; 666 to 667 lbs. 336 to 337; 668 to 669 lbs. 337 to 338; 670 to 671 lbs. 338 to 339; 672 to 673 lbs. 339 to 340; 674 to 675 lbs. 340 to 341; 676 to 677 lbs. 341 to 342; 678 to 679 lbs. 342 to 343; 680 to 681 lbs. 343 to 344; 682 to 683 lbs. 344 to 345; 684 to 685 lbs. 345 to 346; 686 to 687 lbs. 346 to 347; 688 to 689 lbs. 347 to 348; 690 to 691 lbs. 348 to 349; 692 to 693 lbs. 349 to 350; 694 to 695 lbs. 350 to 351; 696 to 697 lbs. 351 to 352; 698 to 699 lbs. 352 to 353; 700 to 701 lbs. 353 to 354; 702 to 703 lbs. 354 to 355; 704 to 705 lbs. 355 to 356; 706 to 707 lbs. 356 to 357; 708 to 709 lbs. 357 to 358; 710 to 711 lbs. 358 to 359; 712 to 713 lbs. 359 to 360; 714 to 715 lbs. 360 to 361; 716 to 717 lbs. 361 to 362; 718 to 719 lbs. 362 to 363; 720 to 721 lbs. 363 to 364; 722 to 723 lbs. 364 to 365; 724 to 725 lbs. 365 to 366; 726 to 727 lbs. 366 to 367; 728 to 729 lbs. 367 to 368; 730 to 731 lbs. 368 to 369; 732 to 733 lbs. 369 to 370; 734 to 735 lbs. 370 to 371; 736 to 737 lbs. 371 to 372; 738 to 739 lbs. 372 to 373; 740 to 741 lbs. 373 to 374; 742 to 743 lbs. 374 to 375; 744 to 745 lbs. 375 to 376; 746 to 747 lbs. 376 to 377; 748 to 749 lbs. 377 to 378; 750 to 751 lbs. 378 to 379; 752 to 753 lbs. 379 to 380; 754 to 755 lbs. 380 to 381; 756 to 757 lbs. 381 to 382; 758 to 759 lbs. 382 to 383; 760 to 761 lbs. 383 to 384; 762 to 763 lbs. 384 to 385; 764 to 765 lbs. 385 to 386; 766 to 767 lbs. 386 to 387; 768 to 769 lbs. 387 to 388; 770 to 771 lbs. 388 to 389; 772 to 773 lbs. 389 to 390; 774 to 775 lbs. 390 to 391; 776 to 777 lbs. 391 to 392; 778 to 779 lbs. 392 to 393; 780 to 781 lbs. 393 to 394; 782 to 783 lbs. 394 to 395; 784 to 785 lbs. 395 to 396; 786 to 787 lbs. 396 to 397; 788 to 789 lbs. 397 to 398; 790 to 791 lbs. 398 to 399; 792 to 793 lbs. 399 to 400; 794 to 795 lbs. 400 to 401; 796 to 797 lbs. 401 to 402; 798 to 799 lbs. 402 to 403; 800 to 801 lbs. 403 to 404; 802 to 803 lbs. 404 to 405; 804 to 805 lbs. 405 to 406; 806 to 807 lbs. 406 to 407; 808 to 809 lbs. 407 to 408; 810 to 811 lbs. 408 to 409; 812 to 813 lbs. 409 to 410; 814 to 815 lbs. 410 to 411; 816 to 817 lbs. 411 to 412; 818 to 819 lbs. 412 to 413; 820 to 821 lbs. 413 to 414; 822 to 823 lbs. 414 to 415; 824 to 825 lbs. 415 to 416; 826 to 827 lbs. 416 to 417; 828 to 829 lbs. 417 to 418; 830 to 831 lbs. 418 to 419; 832 to 833 lbs. 419 to 420; 834 to 835 lbs. 420 to 421; 836 to 837 lbs. 421 to 422; 838 to 839 lbs. 422 to 423; 840 to 841 lbs. 423 to 424; 842 to 843 lbs. 424 to 425; 844 to 845 lbs. 425 to 426; 846 to 847 lbs. 426 to 427; 848 to 849 lbs. 427 to 428; 850 to 851 lbs. 428 to 429; 852 to 853 lbs. 429 to 430; 854 to 855 lbs. 430 to 431; 856 to 857 lbs. 431 to 432; 858 to 859 lbs. 432 to 433; 860 to 861 lbs. 433 to 434; 862 to 863 lbs. 434 to 435; 864 to 865 lbs. 435 to 436; 866 to 867 lbs. 436 to 437; 868 to 869 lbs. 437 to 438; 870 to 871 lbs. 438 to 439; 872 to 873 lbs. 439 to 440; 874 to 875 lbs. 440 to 441; 876 to 877 lbs. 441 to 442; 878 to 879 lbs. 442 to 443; 880 to 881 lbs. 443 to 444; 882 to 883 lbs. 444 to 445; 884 to 885 lbs. 445 to 446; 886 to 887 lbs. 446 to 447; 888 to 889 lbs. 447 to 448; 890 to 891 lbs. 448 to 449; 892 to 893 lbs. 449 to 450; 894 to 895 lbs. 450 to 451; 896 to 897 lbs. 451 to 452; 898 to 899 lbs. 452 to 453; 900 to 901 lbs. 453 to 454; 902 to 903 lbs. 454 to 455; 904 to 905 lbs. 455 to 456; 906 to 907 lbs. 456 to 457; 908 to 909 lbs. 457 to 458; 910 to 911 lbs. 458 to 459; 912 to 913 lbs. 459 to 460; 914 to 915 lbs. 460 to 461; 916 to 917 lbs. 461 to 462; 918 to 919 lbs. 462 to 463; 920 to 921 lbs. 463 to 464; 922 to 923 lbs. 464 to 465; 924 to 925 lbs. 465 to 466; 926 to 927 lbs. 466 to 467; 928 to 929 lbs. 467 to 468; 930 to 931 lbs. 468 to 469; 932 to 933 lbs. 469 to 470; 934 to 935 lbs. 470 to 471; 936 to 937 lbs. 471 to 472; 938 to 939 lbs. 472 to 473; 940 to 941 lbs. 473 to 474; 942 to 943 lbs. 474 to 475; 944 to 945 lbs. 475 to 476; 946 to 947 lbs. 476 to 477; 948 to 949 lbs. 477 to 478; 950 to 951 lbs. 478 to 479; 952 to 953 lbs. 479 to 480; 954 to 955 lbs. 480 to 481; 956 to 957 lbs. 481 to 482; 958 to 959 lbs. 482 to 483; 960 to 961 lbs. 483 to 484; 962 to 963 lbs. 484 to 485; 964 to 965 lbs. 485 to 486; 966 to 967 lbs. 486 to 487; 968 to 969 lbs. 487 to 488; 970 to 971 lbs. 488 to 489; 972 to 973 lbs. 489 to 490; 974 to 975 lbs. 490 to 491; 976 to 977 lbs. 491 to 492; 978 to 979 lbs. 492 to 493; 980 to 981 lbs. 493 to 494; 982 to 983 lbs. 494 to 495; 984 to 985 lbs. 495 to 496; 986 to 987 lbs. 496 to 497; 988 to 989 lbs. 497 to 498; 990 to 991 lbs. 498 to 499; 992 to 993 lbs. 499 to 500; 994 to 995 lbs. 500 to 501; 996 to 997 lbs. 501 to 502; 998 to 999 lbs. 502 to 503; 1000 to 1001 lbs. 503 to 504; 1002 to 1003 lbs. 504 to 505; 1004 to 1005 lbs. 505 to 506; 1006 to 1007 lbs. 506 to 507; 1008 to 1009 lbs. 507 to 508; 1010 to 1011 lbs. 508 to 509; 1012 to 1013 lbs. 509 to 510; 1014 to 1015 lbs. 510 to 511; 1016 to 1017 lbs. 511 to 512; 1018 to 1019 lbs. 512 to 513; 1020 to 1021 lbs. 513 to 514; 1022 to 1023 lbs. 514 to 515; 1024 to 1025 lbs. 515 to 516; 1026 to 1027 lbs. 516 to 517; 1028 to 1029 lbs. 517 to 518; 1030 to 1031 lbs. 518 to 519; 1032 to 1033 lbs. 519 to 520; 1034 to 1035 lbs. 520 to 521; 1036 to 1037 lbs. 521 to 522; 1038 to 1039 lbs. 522 to 523; 1040 to 1041 lbs. 523 to 524; 1042 to 1043 lbs. 524 to 525; 1044 to 1045 lbs. 5

